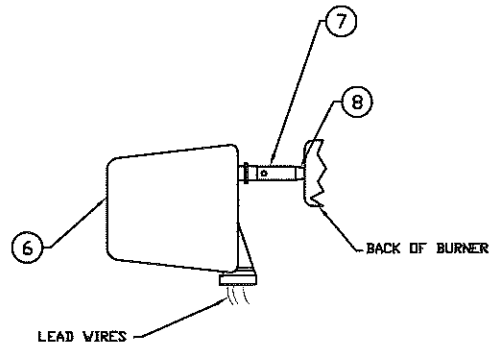
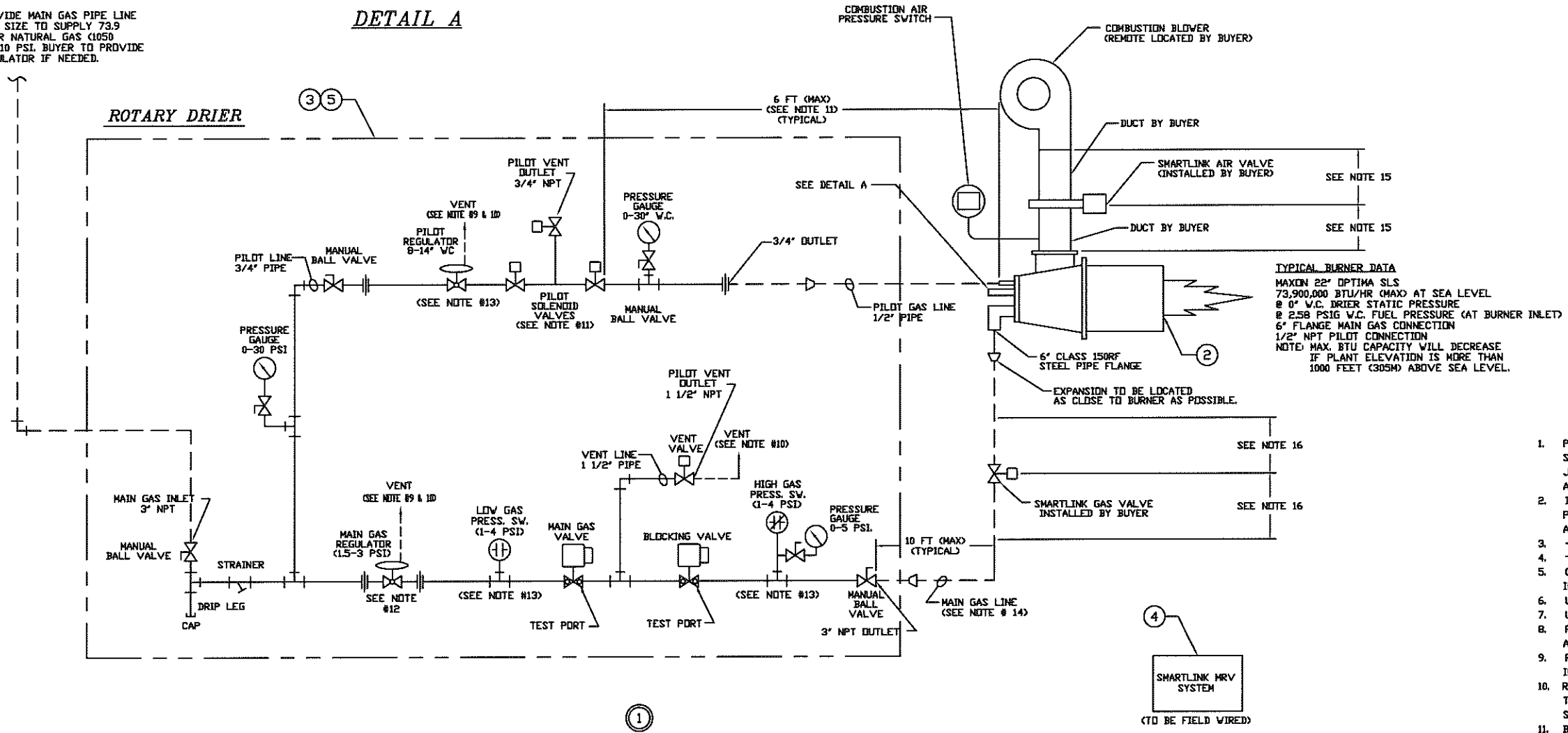


ASSEMBLY NUMBER AND QUANTITY FOR ONE UNIT				ITEM NO.	MAT'L SPEC OR PART NO.	DESCRIPTION	W	L	NLR	DWG. ASS'Y OR ITEM NO.
O4	O3	O2	O1							
						PARENT ASSEMBLY				DSK07103-30
			X	1		GAS PIPING SCHEMATIC				DSK07103-30-01
			1	L	2	300-4208				DSK07103-30/2
			1	L	3	300-4210				DSK07103-30/3
			1	L	4	300-4209				DSK07103-30/4
			1		5					MAXON-D-1101593
			1	L	6	100-7483				DSK07103-30/6
			1		7	NPN				DSK07103-30/7
			1		8	NPN				DSK07103-30/8



DETAIL A

BUYER TO PROVIDE MAIN GAS PIPE LINE OF SUFFICIENT SIZE TO SUPPLY 73.9 MILLION BTU/HR NATURAL GAS (1050 BTU/SCFT) AT 10 PSI. BUYER TO PROVIDE PRESSURE REGULATOR IF NEEDED.



TYPICAL BURNER DATA
 MAXON 22" OPTIMA SLS
 73,900,000 BTU/HR (MAX) AT SEA LEVEL
 8" O.D. V.C. DRIER STATIC PRESSURE
 8" 2.5B PSIG V.C. FUEL PRESSURE (AT BURNER INLET)
 6" FLANGE MAIN GAS CONNECTION
 1/2" NPT PILOT CONNECTION
 NOTE: MAX. BTU CAPACITY WILL DECREASE IF PLANT ELEVATION IS MORE THAN 1000 FEET (305M) ABOVE SEA LEVEL.

PIPING NOTES

- PLANS OF THE TOTAL SYSTEM, INCLUDING PIPING AND ELECTRICAL SCHEMATICS, MUST BE SUBMITTED BY THE BUYER TO THE JURISDICTIONAL AUTHORITIES FOR OBTAINING ANY AND ALL PERMITS AND OR APPROVALS PRIOR TO INSTALLATION.
- IT IS THE RESPONSIBILITY OF THE BUYER TO ASCERTAIN THAT ALL PIPING IS DONE IN COMPLIANCE WITH ANY AND ALL LOCAL, STATE AND NATIONAL CODES.
- FIELD PIPING BY BUYER.
- PIPING BY AERGLIDE.
- CHECK FOR DIRECTIONAL FLOW ARROWS ON ALL COMPONENTS BEFORE INSTALLING THEM.
- USE BLACK IRON PIPE ON MAIN FUEL LINE.
- USE NO CLOSE NIPPLES OR REDUCING BUSHINGS.
- FOLLOW BURNER MANUFACTURER'S INSTRUCTIONS FOR INSTALLATION AND START-UP OF BURNER SYSTEM.
- REGULATORS AND PRESSURE SWITCHES TO BE VENTED TO ATMOSPHERE IN ACCORDANCE WITH JURISDICTIONAL AUTHORITY REGULATIONS.
- RUN VENT LINE AS DIRECT AS POSSIBLE AND VENT TO OUTDOORS THRU ROOF OR SIDEWALL. PROVIDE WEATHER SHIELD AND BUG SCREEN AT TERMINATION POINT.
- BUYER TO INSTALL PIPE TRAIN AS CLOSE TO BURNER AS POSSIBLE. THE PILOT SOLENOID SHOULD BE INSTALLED NOT MORE THAN 6 FT FROM THE PILOT INLET CONNECTION ON THE BURNER. RELOCATE THE PILOT SOLENOID IN THE PILOT LINE IF NECESSARY.
- ADJUST GAS TRAIN MAIN PRESSURE REGULATOR TO SUPPLY NATURAL GAS AT 1.61 PSIG DIFFERENTIAL AT BURNER INLET WITH BURNER OPERATING AT HIGH FIRE.
- SEE OWNER'S MANUAL "ELECTRICAL DEVICE SETTINGS" SHEET FOR SUGGESTED PRESSURE SWITCH SETTINGS FOR BURNER START UP.
- MAIN GAS LINE INSTALLED BY BUYER MUST BE 4".
- SMARTLINK AIR VALVE TO BE INSTALLED WITH 3-4X DUCT DIAMETER OF STRAIGHT DUCT UPSTREAM AND DOWNSTREAM OF THE VALVE (IF POSSIBLE).
- SMARTLINK GAS VALVE TO BE INSTALLED WITH 16 INCHES OF STRAIGHT PIPE UPSTREAM AND DOWNSTREAM OF THE VALVE.

SHOP NOTES:

REV	DESCRIPTION	DATE	BY
C	ADDED NOTES 15 & 16, ADDED SMARTLINK VALVES	7/23/08	J.D.
B	CHANGED MAIN GAS LINE SIZES AND NOTE 14	7/23/08	CAG
A	ADDED AIR VALVE AND DUCT WORK	7/23/08	J.D.

TOLERANCES UNLESS NOTED
 FRACTION ±1/16 DECIMAL ±T.015
 SURFACE FINISH NOTE
 UNLESS OTHERWISE SPECIFIED, FINISHNESS HEIGHT ON ALL MACHINED SURFACES SHALL NOT EXCEED
 125 MICRO-INCHES
 ALL DIMENSIONS ARE IN INCHES EXCEPT AS NOTED

DRAWN	7/23/08
DESIGN	7/23/08
CHECK	10/22/08
APPROVED	10/22/08
SCALE	NONE

Aeroglide Corporation
 P.O. BOX 29505
 RALEIGH, NORTH CAROLINA 27626
 TEL: (919) 851-2000 FAX: (919) 851-8029

Job No. 07103

REF. NO. DSK07062-13

TITLE: GAS PIPING SCHEMATIC

MAXON OPTIMA SLS 22" BURNER W/ PRE-PIPED GAS TRAIN

DRAWING NUMBER DSK07103-30